

Historic Significance

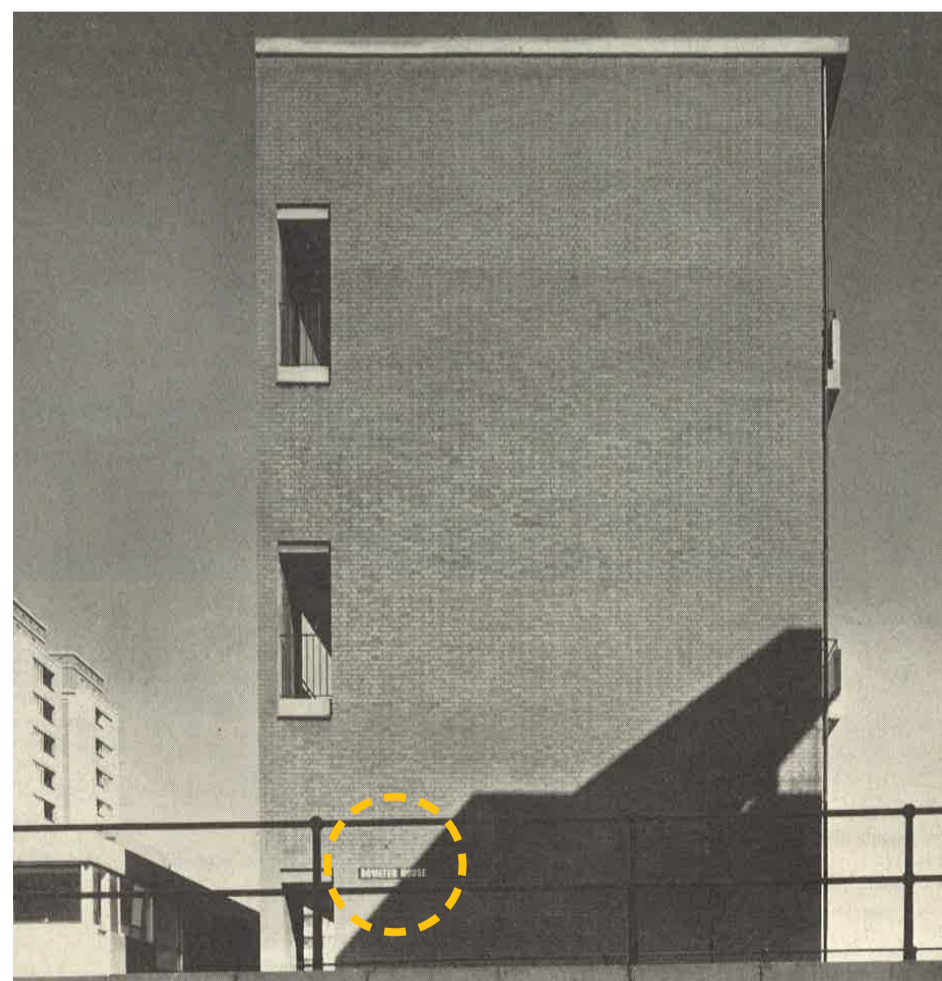
A review of archive photographs, original magazine and journal articles and contract drawings has been undertaken to establish the signage of highest historic significance. All of these signs will be retained and refurbished or repaired where needed.

The original signage can be summarised as:

- cast aluminium 3D estate maps;
- cast aluminium building name signs;
- black & white 'Corporation of London' roundel, and
- ceremonial foundation stone.

The cast aluminium directional signs and private estate signs are likely to have been added soon after completion.

Comparing existing signs with archive photographs

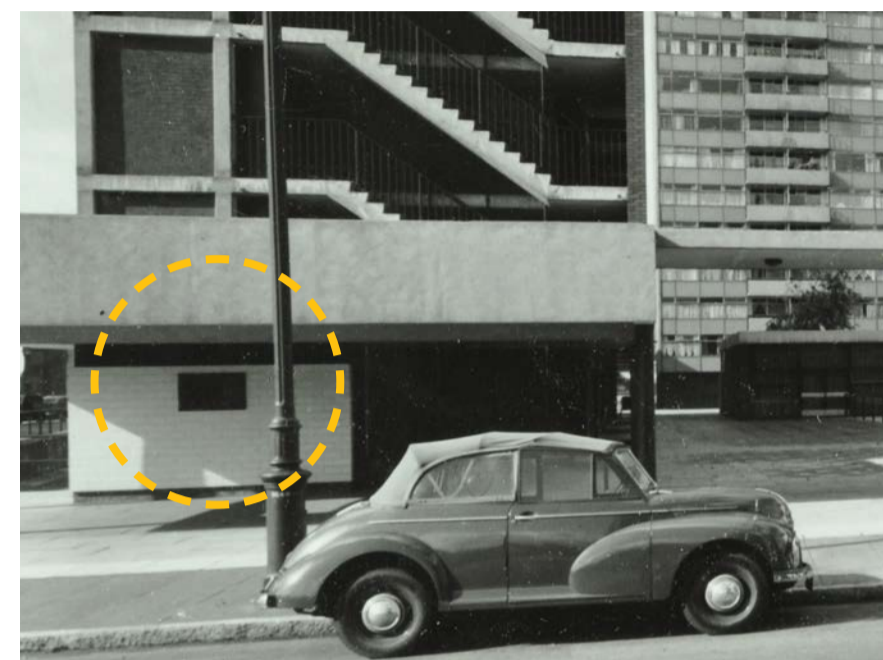


1960 photograph of Bowater House gable wall showing the original cast aluminium building name sign.



Existing photograph of Bowater House gable wall with the same cast aluminium building name sign.

Original Signs



Archive photo: Bowater House 3D map sign.



3D cast aluminium estate map.



Archive photo: Cuthbert Harrowing House building sign.



Cuthbert Harrowing House cast aluminium building sign.



Archive photo: Crescent House cast roundel.



'Corporation of London' cast roundel.



Archive photo: Installation of the ceremonial foundation stone.







Ceremonial foundation stone.

Trial Refurbishment

In order to establish a regime of works for the aluminium signs, Kemp London have carried out a trial refurbishment of two of the building name signs.

Refurbishment Process

- 1  Signs removed and temporary sign installed.
- 2  Signs sand-blast cleaned to remove corrosion and historic coatings.
- 3  Signs redecorated with: protective primer (black), two pack black top coat, and painted raised lettering in white enamel.
- 4  Signs reinstalled.

Sign before refurbishment:



Sign after refurbishment:



Phase 1 Refurbishments

Cast aluminium building name signs



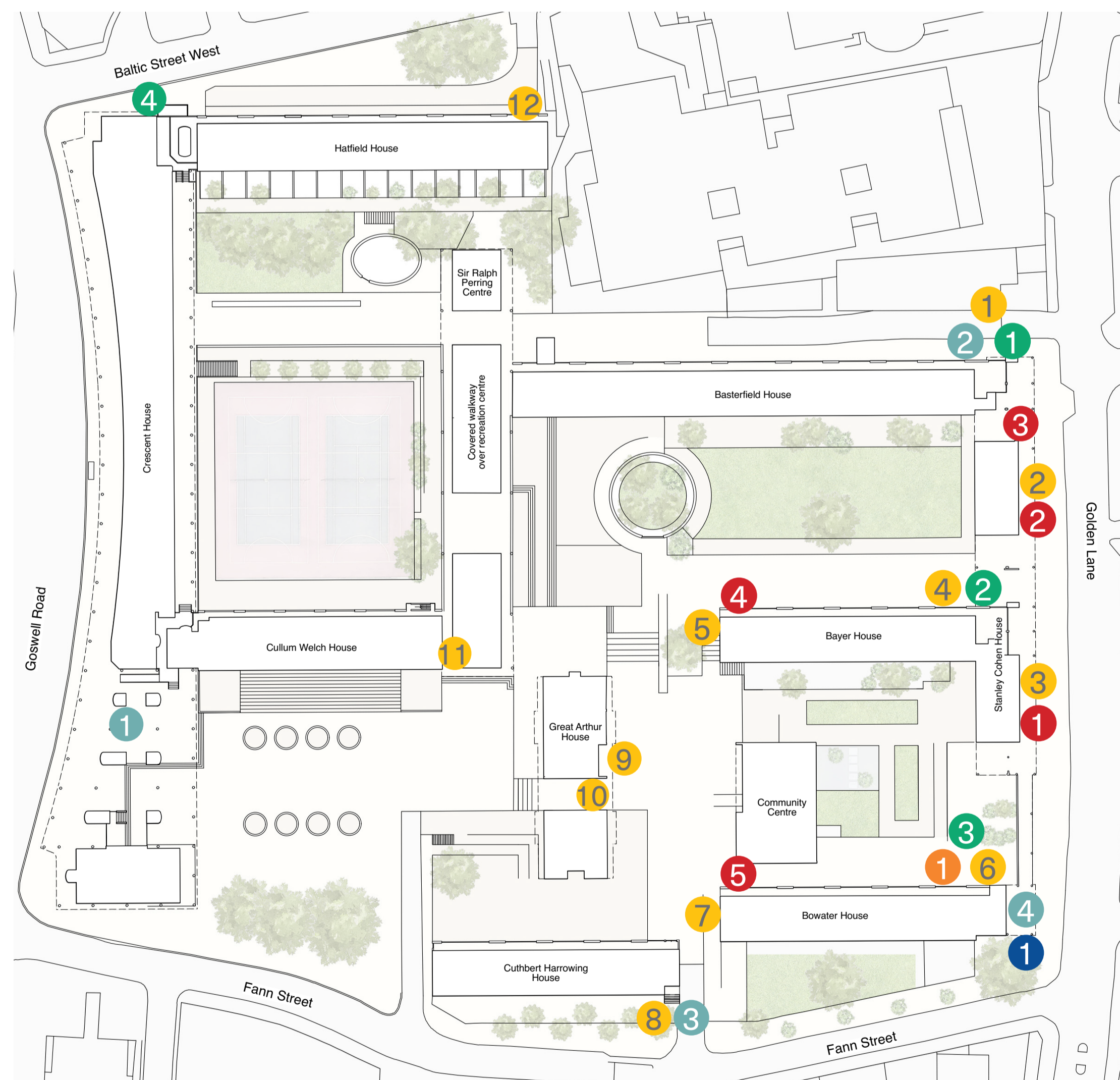
Rights of Way



Directories



Roundel



Next Steps

- Do the acrylic communal entrance signs work?
- Do the building entrance tray signs work?
- What do you think of the large 'Corporation of London' crests?
- Should there be additional signs for instance regarding ownership, noise, games, cycling and skateboarding?



'Corporation of London' crest

Large glass reinforced plastic (GRP) 'Corporation of London' crest. In some instances, the crest has replaced the original, smaller cast crest roundel.



'Corporation of London' tray sign

'Corporation of London' tray sign. This sign is not original and has vinyl lettering with different type font than on the original cast aluminium signs.



Building name tray sign

Building name sign. Steel sign with vinyl lettering. Additional sign.



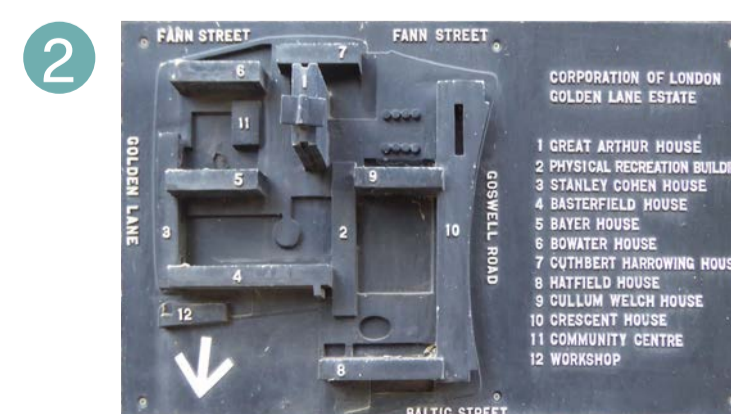
Communal entrance acrylic building sign

Acrylic building signs at communal entrances.

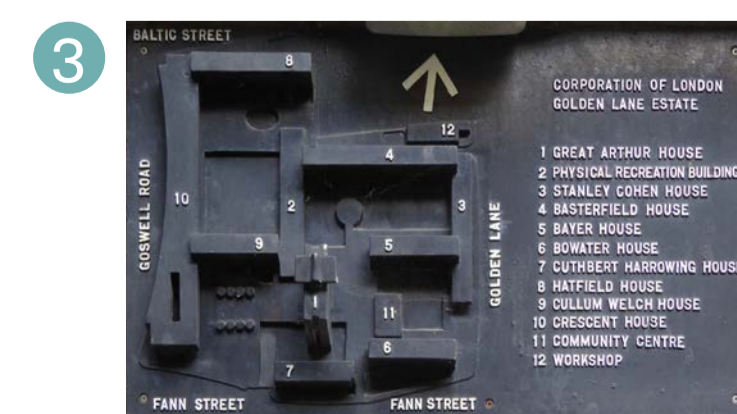
3D Block Maps



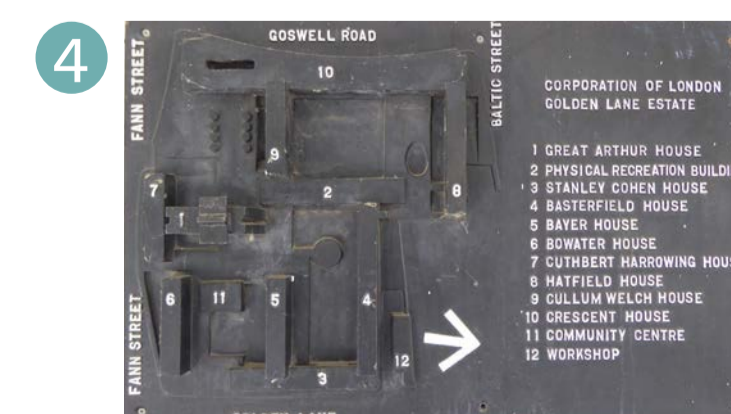
Crescent House



Basterfield House



Cuthbert Harrowing House



Bowater House

Foundation Stone



Bowater House